

CIAAT CTC-940 Printing Preferences

- Device Option
- Printing Area
- Color
- Tools
- Heating Energy
- Magnetic Encoding
- Import/Export
- About

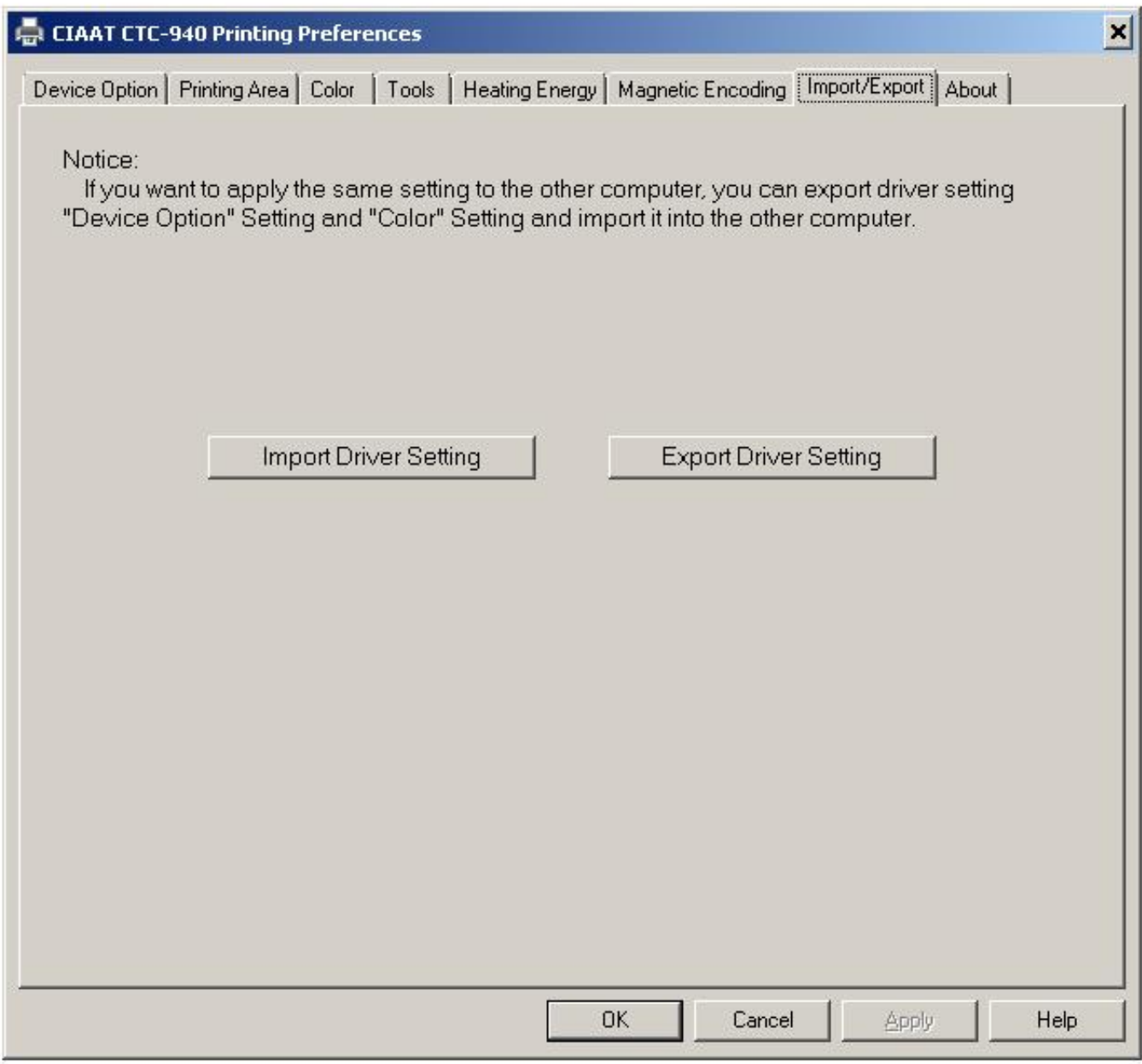


CIAAT CTC-940 Driver

Version 1.0 Build 0001 FW:

Released date: 10/21/2011

- OK
- Cancel
- Apply
- Help



CIAAT CTC-940 Printing Preferences

- Device Option
- Printing Area
- Color
- Tools
- Heating Energy
- Magnetic Encoding
- Import/Export
- About

Notice:
If you want to apply the same setting to the other computer, you can export driver setting "Device Option" Setting and "Color" Setting and import it into the other computer.

Import Driver Setting

Export Driver Setting

- OK
- Cancel
- Apply
- Help

CIAAT CTC-940 Printing Preferences

Device Option | Printing Area | Color | Tools | Heating Energy | **Magnetic Encoding** | Import/Export | About

Coercivity
 High Co
 Low Co

Retry Encoding While Failed
Retry Cards : 1
Retry No : 1

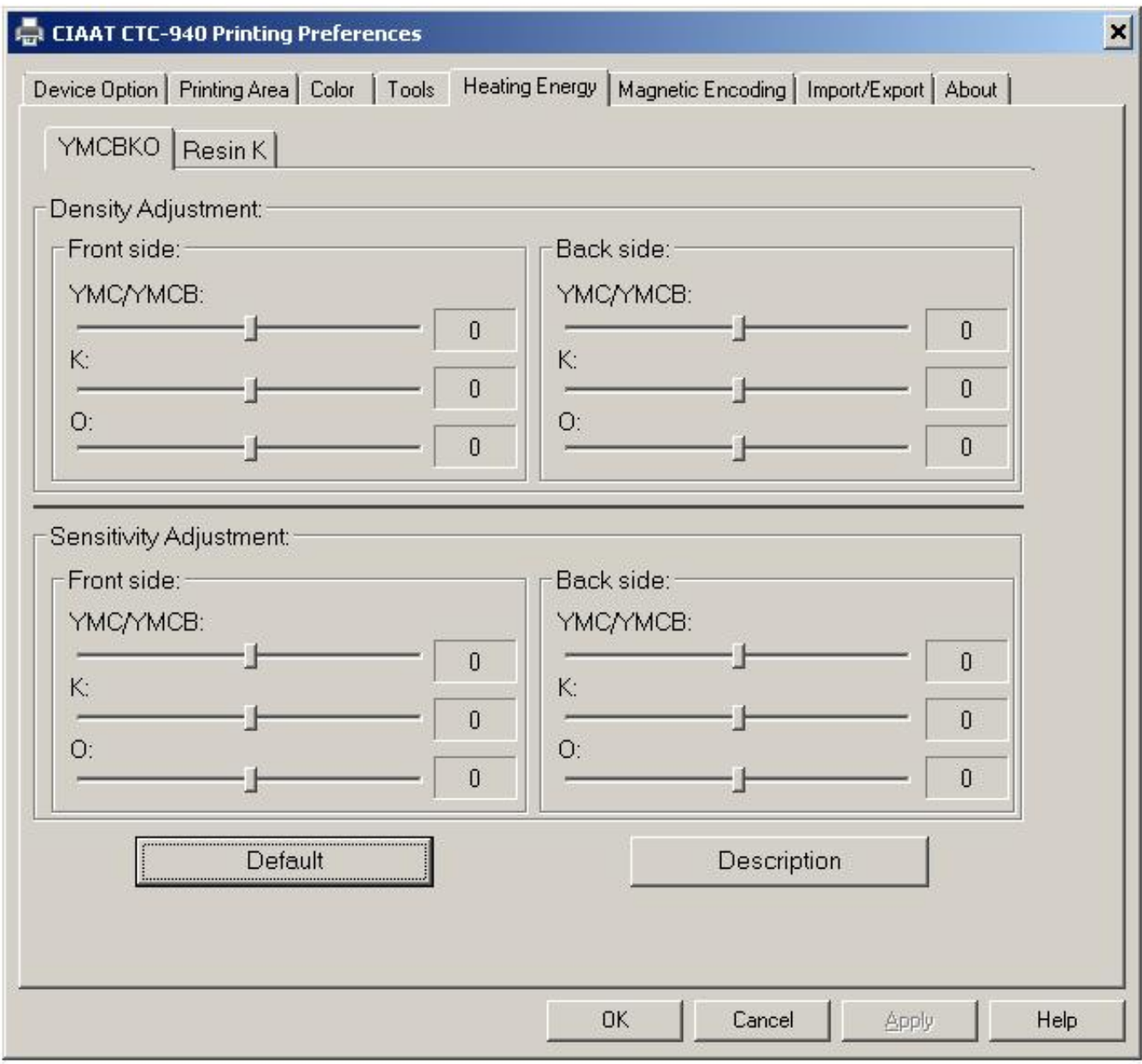
Magnetic Encoding Data

Track 1
 Track 2
 Track 3

Prefix / Suffix Filter
Prefix:
Suffix:
Define Prefix and Suffix of the encoding data to filter out Prefix and Suffix when encoding data from your application.
Example: There are 2 data with Prefix and Suffix as below
~14\$1T0606308&~Y ~14\$211234566&~Y
After inserting ~14\$ into Prefix column and &~Y into Suffix column, then T0606308 will be encoded into track 1 and 11234566 will be encoded into track 2.

Using Database

Encoding Data Start From : 1



Print Position Adjuster



See the direction of card output to correctly adjust value A, B, and C for better edge-to-edge performance.

To reach edge-to-edge, try to increase(+) Value B.



To reach edge-to-edge, try to decrease(-) Value A.

To reach edge-to-edge, try to decrease(-) Value C.



To reach edge-to-edge, try to increase(+) Value C.

A: B: C:

Print Save Default

- Cleaning tool
- Maintenance Info
- Advance Tool
- Ribbon Status
- Correction for ribbon sensor
- Detection for modules
- Reading test for magnetic module

